



# APARTMENT 7

4 CORNWALL GARDENS  
SW7 4AL



THE HARRINGTON COLLECTION  
SOUTH KENSINGTON • SW7





## APARTMENT 7

2 bedroom fifth & sixth floor

Taking up the top two floors, this stunning 2 bedroom apartment is over 900 square feet in size and is fully refurbished to a very high specification boasting top of the range appliances and Apple AirPlay in every room, Apple TV in the main bathroom and trench heating throughout.

Additional to the internal space is an amazing 640 square foot private roof terrace with Dedon furniture, outdoor dining, two large sofas, gas BBQ, TV point Apple AirPlay speakers with breathtaking views over Cornwall Gardens.

The apartment has dedicated house maids who provide partially serviced or fully serviced housekeeping to meet your variable needs.

Free membership to Prana Wellbeing for Pilates, yoga, personal training, massage, and nutrition comes with the apartment.

## Location

Cornwall Gardens is walking distance from Gloucester Road underground station. South Kensington has a wonderful mix of restaurants, bars, museums and art galleries.

The area is residential in character and the quick bypass through Hyde Park takes 5-10 minutes to Mayfair. Knightsbridge and Sloane Square are 5 minutes in a taxi.

Within moments you have a fantastic array of shops such as Whole Foods and Waitrose as well as Wellbeing centers such as Prana Wellbeing and Evolve.







## Specifications

Beds: 1 Super King-size & 1 Double Bed

Bathrooms: 1 bathrooms

Maximum occupancy: 4

980 sq ft.

640 sq ft roof terrace with panoramic

London views

View: Garden and City Skyline

Large reception room with dining table

Widescreen TV

Blu-ray Player and amplifier

Apple TV & Full SKY TV package

Apple AirPlay and speakers in all rooms

Fibre Optic Broadband and WiFi

Fully fitted kitchen with Miele appliances

White bone china and crystal glassware

Video entry door system

24hr CCTV

In-room safe

Maid service including basic toiletries

TV licence

Council tax

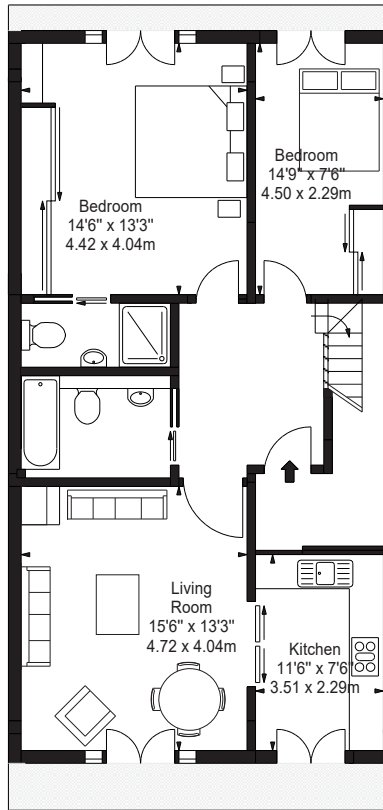
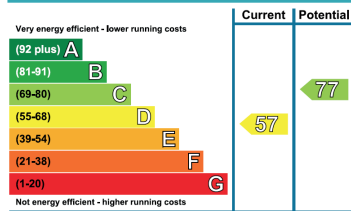
Electricity, gas and water bills

For more information or  
to arrange a viewing  
please contact:

+44 (0) 20 7341 5806

lettings@theharrington.com  
www.theharrington.com

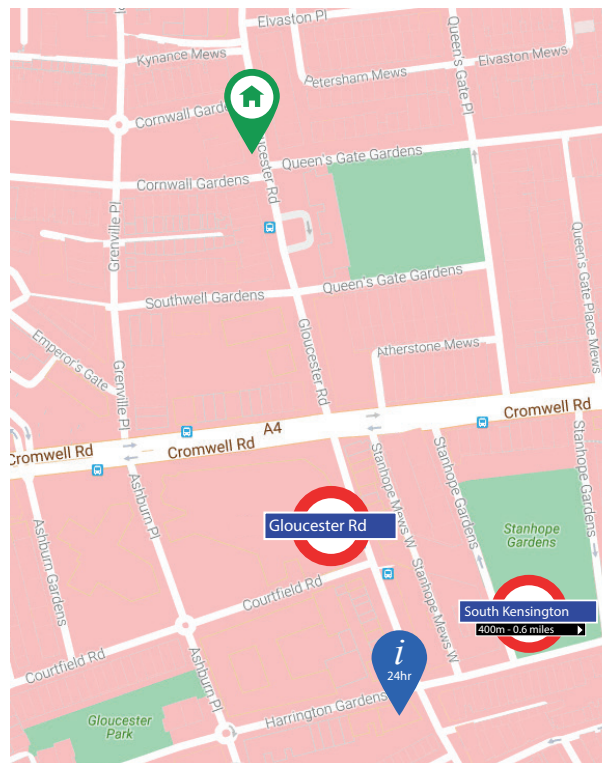
#### Energy Efficiency Rating



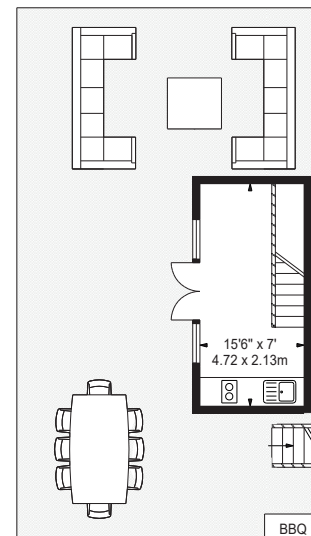
FIFTH FLOOR



Prana Wellbeing, located at 1 Harrington Gardens, provides various types of Pilates equipment classes. They aim to make Pilates accessible to everyone who wants to try it. Prana also provides yoga, massage, nutrition and personal training.



APPROX. GROSS INTERNAL AREA \*  
980 Ft<sup>2</sup> - 91.04 M<sup>2</sup>



SIXTH FLOOR



On the corner of 1 Harrington Gardens, Calix Restaurant is an amazing pizzeria and grill with a wonderfully warm and friendly atmosphere. A great choice on their menu, makes Calix the ideal alternative to using the kitchen within your apartment.