

# APARTMENT 3

3 HARRINGTON GARDENS  
SW7 4JJ



THE HARRINGTON COLLECTION  
SOUTH KENSINGTON • SW7



## APARTMENT 3

Open-plan 1 bedroom, ground floor

This open-plan 1 bedroom apartment is a poster to chic and elegant modern lifestyle. At 410 sq ft, it is super-sized; prospective tenants would be hard-pushed to find a studio apartment which offers such a vast amount of space and storage.

Across the prime white oak wood floor, along the far wall you'll find all the storage you'll ever need for your extended London stay. Opposite the huge mirrored wardrobe is the kitchen. The designer food preparation area with state-of-the-art appliances and elegant finishes, is a joy to use. The space afforded to you in this apartment means the sleeping space and dining area feel very separate and private.

In-keeping with the rest of the apartment, the bathroom is a beautiful, clean, crisp, refreshing alcove that is a real pleasure to make time to use.

The apartment has dedicated house maids who provide partially serviced or fully serviced housekeeping to meet your variable needs.



## Location

The property, is located within easy walking distance of Gloucester Road underground station (150m away), with many excellent shops, restaurants, museums and art galleries on the door step.

The area is residential in character and the quick bypass through Hyde Park (which is within troling distance) takes 5-10 minutes to Mayfair. Knightsbridge and Sloane Square are 5 minutes in a taxi. Alongside this, there is easy access to the Cromwell Road with direct links to the M4 and Heathrow Airport.



## Specifications

Beds: One super king-size bed  
Maximum occupancy: 2  
410 sq ft.  
Generously sized living space  
Four seasons-style bed and bedding arrangement  
Plush sofa bed  
Ample storage in floor-to-ceiling mirrored wardrobe  
Glass desk workspace  
LED widescreen television  
Full, Sky TV package  
Fiber optic broadband and Wifi

American white oak wood floors  
Fully-integrated kitchen with Caple appliances  
Coffee machine, Combi oven, Dishwasher, Induction hob and Fridge freezer  
Designer, mirrored bathroom  
Maid service including basic toiletries  
TV licence  
Council tax  
Electricity, gas and water bill

For more information or to arrange a viewing please contact:

1-3 Months:

+44 (0) 20 7341 5810

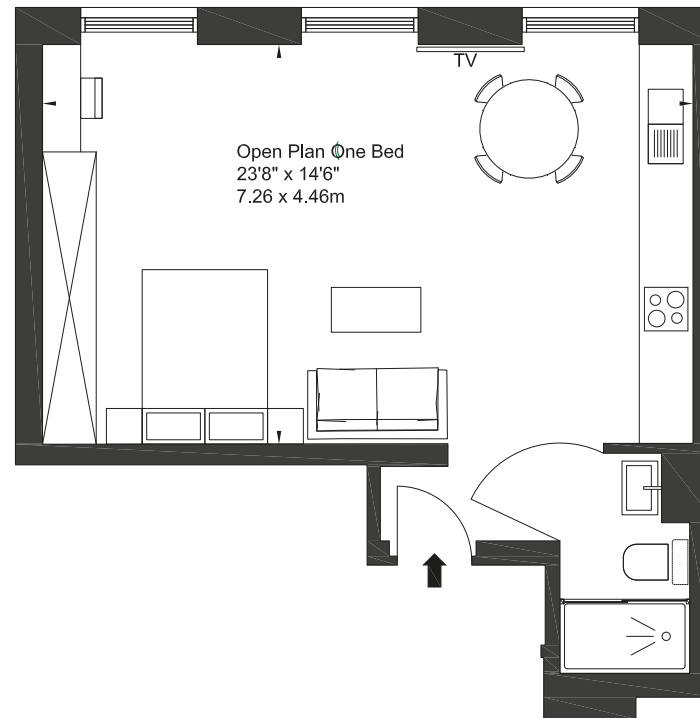
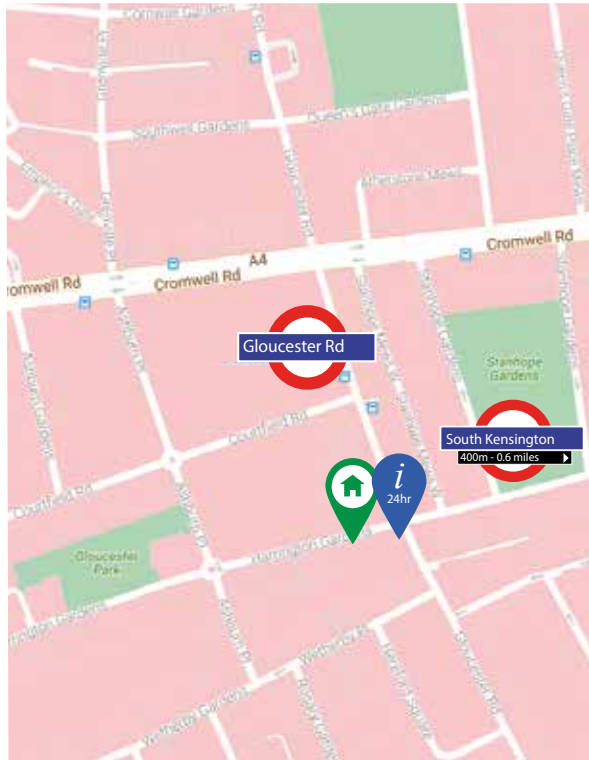
sales@theharrington.com

3 Months +:

+44 (0) 20 7341 5806

lettings@theharrington.com

www.theharrington.com



Approx Gross Internal Area\*  
410 sq.ft. (38.10m<sup>2</sup>)



The Harrington Collection is the proud owner of Prana Wellbeing, located at 1 Harrington Gardens. Prana provides one of the largest Pilates studios in Kensington and Chelsea. It also provides yoga, massage, nutrition and personal training.



On the corner of 1 Harrington Gardens, Calix Restaurant is a pizzeria and grill with a wonderfully warm and friendly atmosphere. With a great choice on their menu, Calix is the perfect alternative to making use of the kitchen within your apartment.