

# APARTMENT GR02

1 HARRINGTON GARDENS  
SW7 4JJ



THE HARRINGTON COLLECTION  
SOUTH KENSINGTON • SW7



## APARTMENT GR02

### 2 Bedroom, 2 Bathroom Ground Floor

This elegantly designed chic London north-facing two bedroom apartment is fitted to the highest standard in modern luxury living. The apartment provides guests with copious amounts of space and natural daylight whilst furnishing their stay with all the latest in in-apartment comfort.

The two specially designed super-king size beds have been created to provide the ultimate in restorative sleep whilst the exclusively engineered Italian kitchens are fully fitted to deliver all the comforts of home. Alongside this each bedroom enjoys its own en-suite bathroom fitted out with stunning walk-in showers and plenty of room to unwind and relax and aching muscles.

These features are coupled with the latest technology using wireless sound-systems throughout, ultra high-speed WiFi internet free of charge (up to 250Mbps), dedicated fully sky package and the latest flatscreen technology.

### Location

Harrington Gardens is walking distance from Gloucester Road underground station. South Kensington has a wonderful mix of the world's best restaurants, bars, museums and art galleries.

The area is residential in character and the quick bypass through Hyde Park takes 5-10 minutes to Mayfair. Knightsbridge and Sloane Square are 5 minutes in a taxi.

Within moments you have a fantastic array of shops such as Whole Foods and Waitrose as well as Wellbeing centers such as Prana Wellbeing and Evolve.





## Specifications

Beds: Two super king-size bed  
 Bathrooms: Two bathrooms  
 Maximum occupancy: 4  
 723 sq.ft.  
 Split level  
 View: City  
 Widescreen TV  
 Blu-ray Player and amplifier  
 Apple TV and Full SKY TV package.  
 Apple AirPlay and speakers in all rooms  
 Fibre-Optic Broadband and Wifi

Fully fitted kitchen with Miele appliances  
 White bone china and crystal glassware  
 24hr CCTV  
 In-room safe

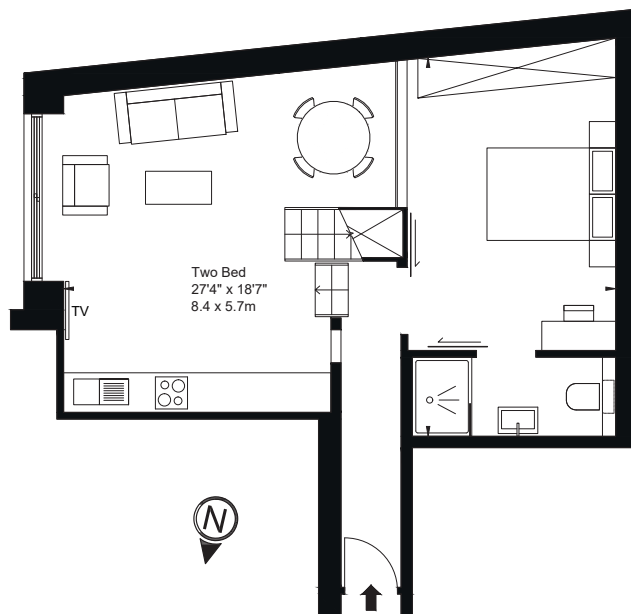
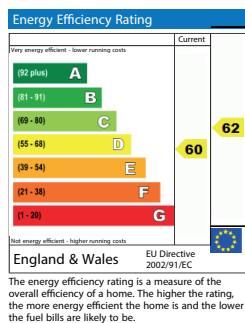
Optional services include:  
 Maid service including basic toiletries  
 TV licence  
 Council tax  
 Electricity, gas and water bills

Min. Duration	Price
12 Months*	£2600pw
9 Months*	£2775pw
6 Months*	£2950pw
3 Months*	£3125pw
*Plus Services	£200pw
2 Months	£3500pn
1 Month	£3675pn

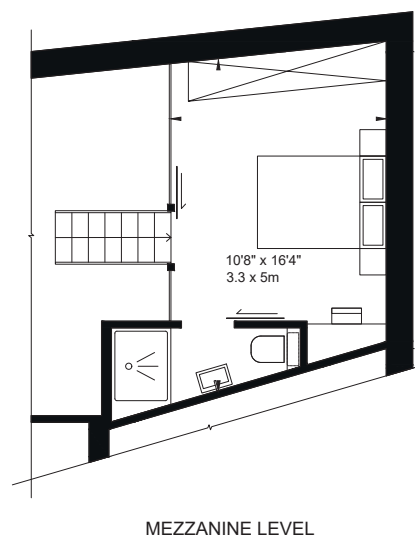
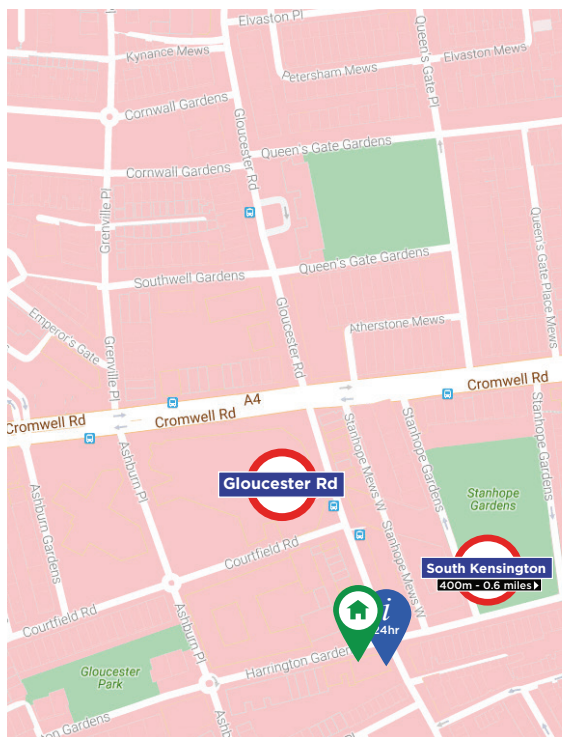
For more information or to arrange a viewing please contact:

+44 (0) 20 7341 5810

sales@theharrington.com  
www.theharrington.com



Prana Wellbeing, located at 1 Harrington Gardens, provides various types of Pilates equipment classes. They aim to make Pilates accessible to everyone who wants to try it. Prana also provides yoga, massage, nutrition and personal training.



MEZZANINE LEVEL



On the corner of 1 Harrington Gardens, CALIX Restaurant is an amazing pizzeria and grill with a wonderfully warm and friendly atmosphere. A great choice on their menu, makes CALIX the ideal alternative to using the kitchen within your apartment.